

2
YEAR

Replacement
Warranty*

**10W & 15W ROUND AND OVAL LED
IP54 EXTERIOR BUNKER LIGHTS**

10Watt or 15Watt Tricolour Led Bunker Light.
Available in round or oval design with either
white/black trim included.



Tricolour



Non
Dimmable



CRI



IP54
Weatherproof
Rating



Energy
Efficient



LED
Lamp Life



LED Type



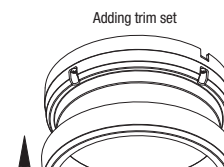
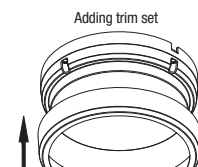
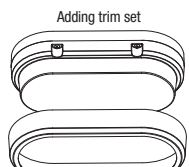
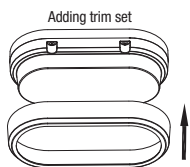
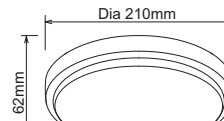
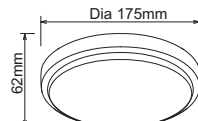
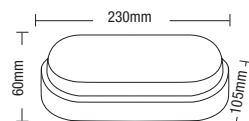
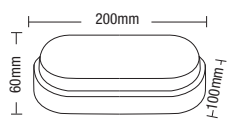
Beam Angle



Class II

• Surface mounted LED ceiling light

DIMENSIONS



AS/NZS 60598.2.1:2014
SAA : GMA-507872

10W & 15W ROUND AND OVAL LED IP54 EXTERIOR BUNKER LIGHTS

FEATURES

- Suitable for residential and apartment interior or exterior applications
- Complete with switchable tricolour colour temperature 3000k, 4000k, 6500k which allows you the choice of a Warm White, Neutral White or Daylight colour temperatures
- Integrated LED light 10W 1000lm or 15W 1500lm light output, ideal for exterior installation weather resistant with an IP54 rating
- Durable white polycarbonate body and diffuser **(complete with optional black trim)**
- Ideal for wall or ceiling surface mount application
- Weather resistant IP54
- LED light output equivalent to a 60 watt standard light globe
- Choose from easy to fit UV resistant black clip on trim or white
- Provides a uniform light - output using SMD LED modular technology
- Non dimmable
- IP54, weatherproof



10W Round Illustration only shown for packaging example.

SPECIFICATIONS

Model name	Cove
Rating power	10W or 15W
Input voltage	200V-240V
Frequency	50Hz
Light type	Tricolour SMD 2835 LED
LED type	LED modular (non replaceable)
Driver type	Integrated
Colour temperature	3000k / 4000k / 6500k
Colour temperature index	>80
Beam angle	120°
Power factor	>0.5
Lumens	10W ≥ 1000lm or 15W > 1500lm
Lumen efficiency	100 Lumens/per watt
IP rating	IP54
Ta°	Minus 5°C + 40°C
Size (mm)	Diameter 200mm x 100mm(h)
Housing type	Polycarbonate
Diffuser Lens	Polycarbonate
Colour Trim	White or optional black trim included
Mounting type	Wall or ceiling surface mounted

INSTALLATION

Installation	By licensed electrician only
Warranty	2 year replacement warranty*

* For Martec warranty statement please refer to the website www.martecaustralia.com.au
Warranty is void unless installed by a licensed electrician.

SHIPPING

Item No.	Description of Goods	Pcs/Ctn	Carton Dimensions		
			L(cm)	W(cm)	H(cm)
MLXCO34610	10W	20	43	37.5	23.5
MLXCO34615	15W	20	49	38.5	23.5
MLXCR34610	10W	20	39.5	38	38
MLXCR34615	15W	20	45	40	45

AVAILABLE IN WHITE/BLACK



Model	Colour	Barcode
MLXCO34610	White/Black	
MLXCO34615	White/Black	



Model	Colour	Barcode
MLXCR34610	White/Black	
MLXCR34615	White/Black	