

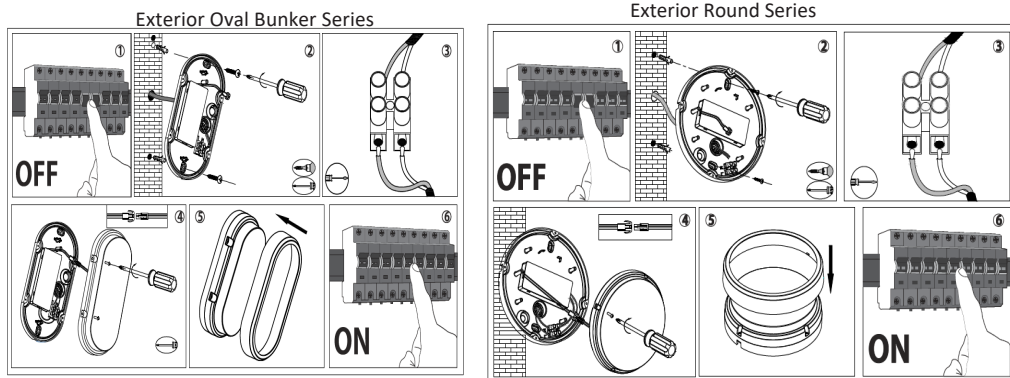


**COVE LED 10W and 15W TRICOLOUR OVAL OR ROUND EXTERIOR WHITE BUNKER
LIGHT SERIES WITH OPTIONAL BLACK TRIM KIT**

Product No's: MLXCR34610-MLXCR341615-MLXCO34610-MLXCO34615

IP54 Weather Resistant

Installation Diagram:



THIS FITTING MUST BE INSTALLED BY A QUALIFIED ELECTRICAL CONTRACTOR

Product Specifications for 10W & 15W Models

- Power 220-240V/50Hz
- Wattage 10W or 15W models
- CRI >80
- Housing and Lens Cover Material :Polycarbonate
- LED TYPE SMD2835 (non replaceable)
- Beam Angle 120°
- Tricolour Temperature 3000K,4000K,6500K
- Lumens 10W(1000lm) 15W(1500lm)
- Lumen Efficiency (lumens/watt) 100(lumens/per watt)
- Lifetime 25,000hrs
- Ta° -5°C -+ 40°C
- IP Rating IP54
- Protection: Class Two ☐



**Replacement
Warranty**



www.martecaustralia.com.au | 02 8778 7500 | sales@martecld.com.au

Page 1

THIS CEILING LED LIGHT MUST BE INSTALLED BY A QUALIFIED ELECTRICIAN, AND AN ELECTRICAL SAFETY CERTIFICATE MUST BE ISSUED ON COMPLETION OF THE INSTALLATION.

Warranty :

Warranty does not include damage or loss arising from incorrect installation, operation or maintenance of this product, damage caused through modification, incorrect installation, service by unqualified or unauthorised personnel or lack of regular maintenance and cleaning. Proof of installation by qualified personnel may be required, e.g.. Electrical Safety Certificate. Proof of purchase must be supplied with all warranty claims.

This warranty is provided in addition to any other rights and remedies of the customer under any law. In applications not intended for household, personal or domestic use, liability is limited to replacement or reimbursement of product only.

Our goods come with guarantees that cannot be excluded under the Australian Consumer Law. You are entitled to a replacement or refund for a major failure and compensation for any other reasonably foreseeable loss or damage. You are also entitled to have the goods repaired or replaced if goods fail to be of acceptable quality and the failure does not amount to a major failure.

Any claim under this replacement warranty must be made within 2 years of the date of purchase of the product.

For all warranty information please refer to the Martec website.

www.martecaustralia.com.au

Martec Australia Pty Ltd

Email: sales@martecld.com.au

Contact Phone: 02 8778 7500

Contact Fax: 02 8778 7555

Company Address:

6 Austool Place

Ingleburn NSW 1890

Opening Hours:

Monday to Friday

Warehouse hours: 7.30am – 3.30pm

Office hours: 8.00am – 4.00pm EST

WWW.MARTECAUSTRALIA.COM.AU

