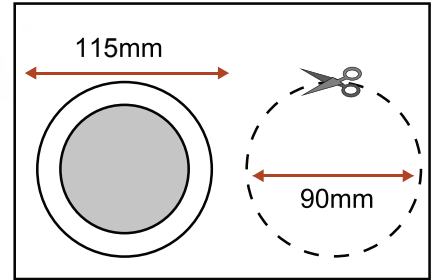
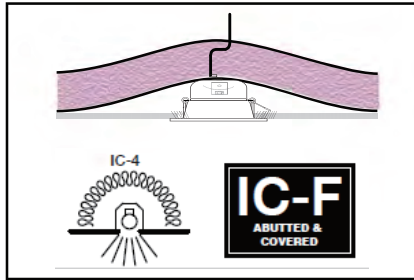
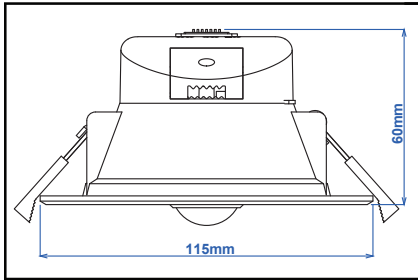


PLEASE READ THESE INSTRUCTIONS CAREFULLY BEFORE INSTALLATION. PLEASE
RETAIN INSTRUCTIONS FOR FUTURE REFERENCE.

Zone 9W PIR Motion Sensor Tricolour LED Downlight Model: TLZD3459WDS

FITTING MUST BE INSTALLED BY A QUALIFIED ELECTRICAL CONTRACTOR

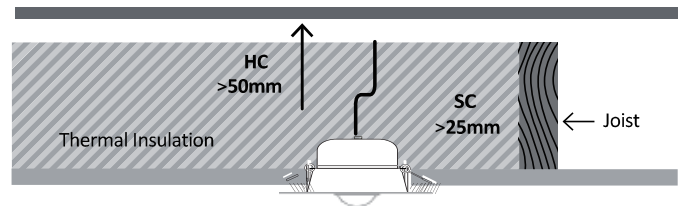


INSTALLATION

- This unit must be installed and wired by a qualified electrical contractor
- Ensure power is off at mains before wiring and installation
- For maximum number per circuit breaker, use the recommended quantities as for a standard mains 50W lamp (or 100W R80)
- Ensure that the area that the unit is to be fitted has a minimum height clearance of 50mm.
- Cut a 90mm hole in the ceiling for each unit ensuring no positions are under joists, cables, pipes etc.
- Select desired Colour Temperature (3000K, 4000K or 5000K) by toggling the switch the back of the down-light.
- Insert the power cable plug into the power socket located in the ceiling.
- Feed springs through the ceiling hole slowly releasing the unit up to the ceiling. The springs will hold the fitting in place.
- For indoor use only. Ta = 25°C
- Turn the power on

INSULATION

Thermal insulation clearance class IC-4 covered; meaning that the Zone LED downlight can be covered entirely by insulation abutting or is within 100mm horizontally of the luminaire.



DIMENSION (FOR DRIVER)	CLEARANCE
SC -Side clearance to thermal insulation and building element.	25mm
HC - Height clearance to thermal insulation and building element.	50mm

IMPORTANT NOTE

This fixture must not be installed with loose fill insulation (as defined in NZS 4246) such as macerated paper and wool.

This Downlight has achieved an IC-F IC-4 insulation rating in accordance with AS/NZS 60598.2.2

PIR Sensor Features

Sensor detection range: 4m max. (at mounting height 2.5m) Sensor detection angle: 360°

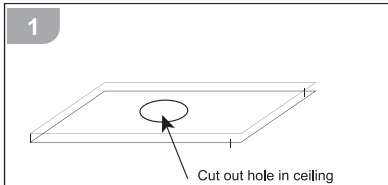
On time: 1 minute (Subsequent detection will restart the on time) Daylight Sensor: Only works when ambient light is low (at night)

Sensor Instructions:

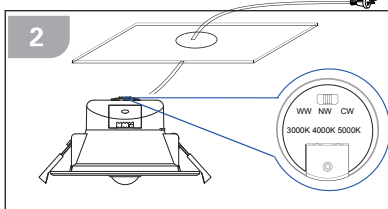
The maximum detection height for the sensor is 2.8m (Figure 2).

The sensor is not suitable to use with dimmer switches and should not be used with a circuit which has a dimmer.

INSTRUCTIONS:



Cut out (size:90mm) hole in the ceiling.
Ensure there is sufficient clearance in the area where you will position the fitting.



Select the colour preference by sliding the dip switch on rear of down light. (3000K, 4000K, 5000K)
Connect fitting to the mains power via power plug.

Sensor Movement

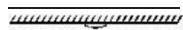
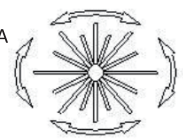


Fig 1A



More Sensitive



Less Sensitive

Detection Area

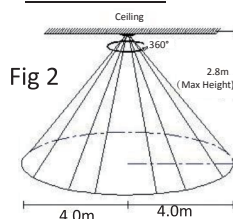


Fig 2

The sensor has increased sensitivity with movement across the detection area (Figure 1A)

The sensor has reduced sensitivity with movement towards and away from the detection area (Figure 1B)

Aust/NZ Approval No.
SAA-10479

