

Nova (10W) LED Wall Lights Installation Guide

We strongly recommend that you read this manual carefully before installation.
Installation MUST be carried out by a qualified and licensed electrician.



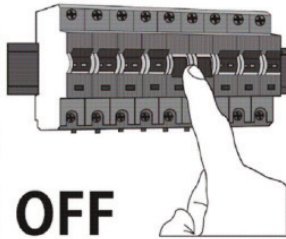
Replacement
Warranty

Models Parameters

MLXN34510W 10W LED Wall Light IP54 Tricolour White
MLXN34510M 10W LED Wall Light IP54 Tricolour Matt Black

Installation Instructions

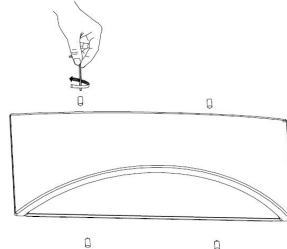
Step 1



OFF

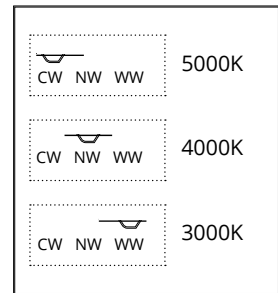
Switch off the mains.

Step 2



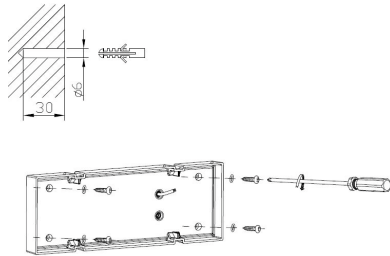
Unscrew and remove mounting bracket by the allen key supplied.

Step 3



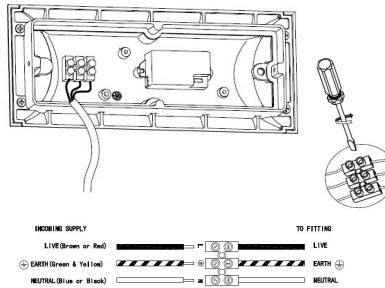
Choose colour temperature by flicking the switch.

Step 4



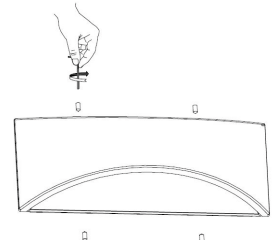
Mount the bracket on the desired surface using the two screws supplied.

Step 5



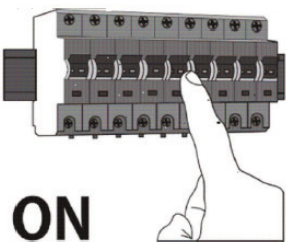
Wire to mains as illustrated above.

Step 6



Attach fitting back onto the bracket by fastening the two fixing screws.

Step 7

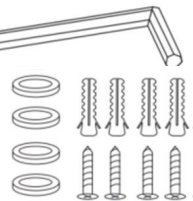


ON

Switch on the mains.

Accessories Supplied

1x allen key
4x washers
4x wall plugs
4x screws



Nova (10W) LED Wall Lights Installation Guide

Data Table

Models	Power (W)	PF	CCT (K)	Weight (KG)	Operation Temperature (Degree)	IP
MLXN34510W	10	≥ 0.5	3000 4000 5000		+40° -20°	54
MLXN34510M	10	≥ 0.5	3000 4000 5000		+40° -20°	54

WARNING

- Installation of product **MUST** follow SAA standards and meet local authority regulations.
- Installation **MUST** be carried out by a qualified and licensed electrician.
- Light **MUST** be earthed.
- Light **MUST** be firmly installed to a flat solid surface, wall or ceiling.
- **DO NOT** immerse any part of the light fitting into water or any form of liquid.
- **DO NOT** look directly into the LED light.
- The warranty is **VOID** if product is not installed according to this installation guide.

2 Year Replacement Warranty

Visit our website for details <https://www.martecaustralia.com.au/warranty-statement/>

