

Torino LED Wall Lights Installation Guide

We strongly recommend that you read this manual carefully before installation.
Installation MUST be carried out by a qualified and licensed electrician.



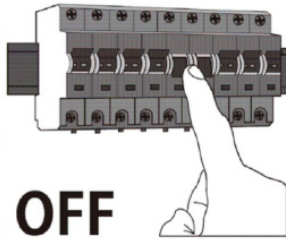
Replacement
Warranty

Models Parameters

MLXT3458W	6W LED Wall Light IP54 Tricolour White
MLXT3458M	6W LED Wall Light IP54 Tricolour Matt Black
MLXT3459W	9W LED Wall Light IP54 Tricolour White
MLXT3459M	9W LED Wall Light IP54 Tricolour Matt Black

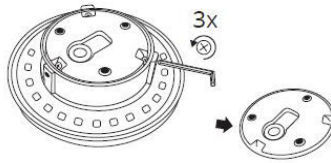
Installation Instructions

Step 1



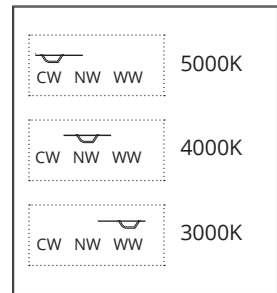
Switch off the mains.

Step 2



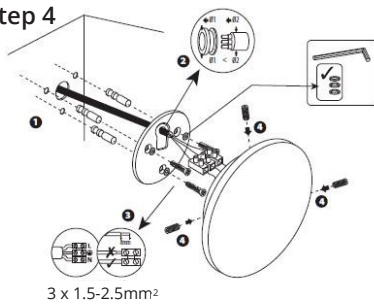
Unscrew and remove mounting bracket by the allen key supplied.

Step 3



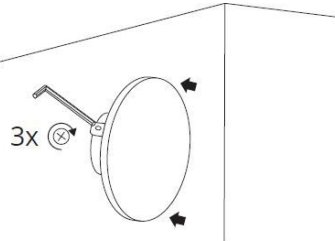
Choose colour temperature by flicking the switch.

Step 4



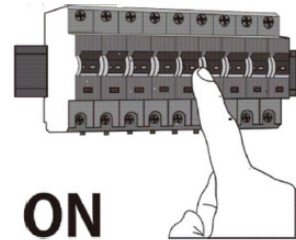
Mount the bracket on the desired surface using the three screws supplied and wire to mains as illustrated above.

Step 5



Attach fitting back onto the bracket by fastening the three fixing screws.

Step 6

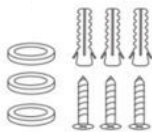


Switch on the mains.

Accessories Supplied



- 1x allen key
- 3x washers
- 3x wall plugs
- 3x screws



Torino LED Wall Lights Installation Guide

Data Table

Models	Power (W)	PF	CCT (K)	Weight (KG)	Operation Temperature (Degree)	IP
MLXT3458W	6	≥ 0.9	3000 4000 5000		+40° -20°	54
MLXT3458M	6	≥ 0.9	3000 4000 5000		+40° -20°	54
MLXT3459W	9	≥ 0.9	3000 4000 5000		+40° -20°	54
MLXT3459M	9	≥ 0.9	3000 4000 5000		+40° -20°	54

WARNING

- Installation of product **MUST** follow SAA standards and meet local authority regulations.
- Installation **MUST** be carried out by a qualified and licensed electrician.
- Light **MUST** be earthed.
- Light **MUST** be firmly installed to a flat solid surface, wall or ceiling.
- **DO NOT** immerse any part of the light fitting into water or any form of liquid.
- **DO NOT** look directly into the LED light.
- The warranty is **VOID** if product is not installed according to this installation guide.

2 Year Replacement Warranty

Visit our website for details <https://www.martecaustralia.com.au/warranty-statement/>

