

# BANDIT

## BANDIT TRICOLOUR LED SPOTLIGHT WITH PIR SENSOR Instruction Manual



MLXB3451MS



MLXB3451WS



MLXB3452MS



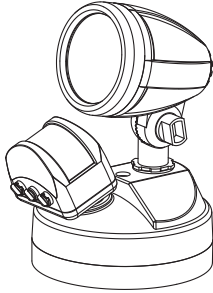
MLXB3452WS



The product is energy - saving automatic sensor lamp , adopting integrated circuit and precise detecting components .It gathers automatism ,convenience ,safety,saving-energy and practical function . Its performance is stable . It can identify day and night .The lamp can turn on when one enters detection field and can turn off automatically when one leaves detection field.

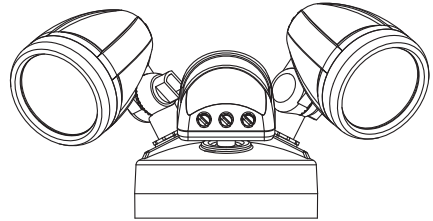
## Part list

### Single Head



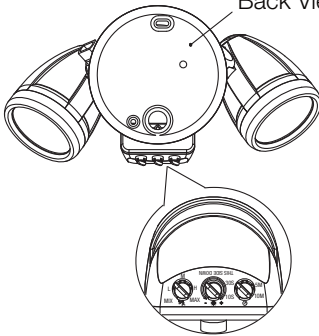
MLXB3451MS  
MLXB3451WS

### Double Head



MLXB3452MS  
MLXB3452WS

### Back View



### Accessories



1 × silicone plugs



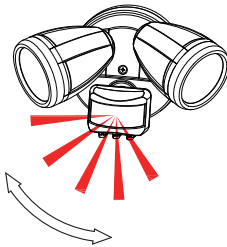
1 × silicone plugs



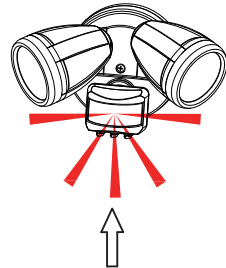
2 × wall plugs



2 × M4 screw



Good sensitivity



Poor sensitivity

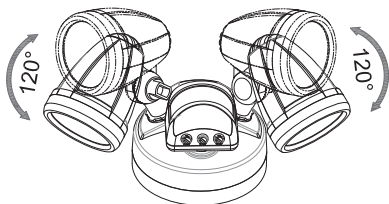
## Specification

Item No.	MLXB3451MS ( Matt Black ) MLXB3451WS ( Matt White )	MLXB3452MS ( Matt Black ) MLXB3452WS ( Matt White )
Product Name	BANDIT Tricolour Single Head LED Spotlight with PIR Sensor	BANDIT Tricolour Double Head LED Spotlight with PIR Sensor
Wattage	12W	24W
Input Voltage	220-240VAC	220-240VAC
Lumen	1050lm / 1100lm / 1100lm	2100lm / 2200lm / 2200lm
CCT	3000K-4000K-5000K	3000K-4000K-5000K
IP Rating	IP54	IP54
Beam angle	90°	90°
CRI	>80	>80
LED	COB LED	COB LED
Sensor type	PIR Sensor	PIR Sensor
Detection range	180°	180°
Detection distance	16m (Max)	16m (Max)
Time-delay	10sec/30sec/1Min/5Min/10Min	10sec/30sec/1Min/5Min/10Min
Sensor Mode	L=Short Detection Distance M=Medium Detection Distance H=Maximum Detection Distance	L=Short Detection Distance M=Medium Detection Distance H=Maximum Detection Distance
Ambient Light	<10/2000LUX (adjustable)	<10/2000LUX (adjustable)
Installation height	1.8-2.5m	1.8-2.5m
Manual override	Yes	Yes
Material	Plastic (ABS & PC)	Plastic (ABS & PC)

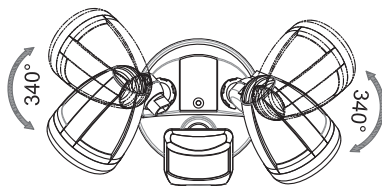
## Sensor Function

1. Can identify day and night: The consumer can adjust working state in different ambient light.  
It can work in the daytime and at night when it is adjusted on the "sun" position (max).  
It can work in the ambient light less than 10LUX when it is adjusted on the "-" position (min).  
As for the adjustment pattern, please refer to the testing pattern.
2. To override Sensor Function, quickly switch the power off/on off/on twice at the wall switch (less than 3 seconds).  
Your light should now be on MANUAL MODE and stay on permanently.
3. To change back to AUTO MODE, turn the power OFF and wait for 10 seconds, then turn it back ON again.  
Please note that at this time the light will turn ON for 10-20 seconds and turn OFF again  
– at this point it will return to AUTO/SENSOR MODE.
4. SENS adjustable: It can be adjusted according to using location.  
The detection distance of low sensitivity could be only≈7m and high sensitivity could be≈16m  
which fits for large room.
5. Time-Delay is added continually: When it receives the second induction signals within the first induction,  
it will restart to time from the moment.

## Rotation of Lamp head & Sensor

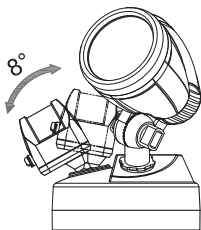


The lamp head can be rotated  
up and down 120°

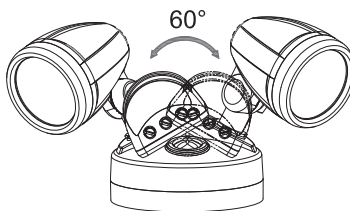


The lamp head can be rotated  
left and right 340°

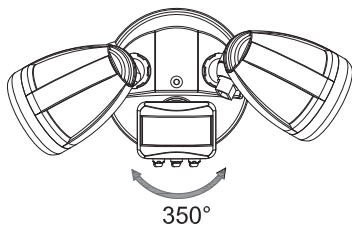
## Sensor angle



Up and down angle of rotation is 8°



Left and right angle of rotation is 60°

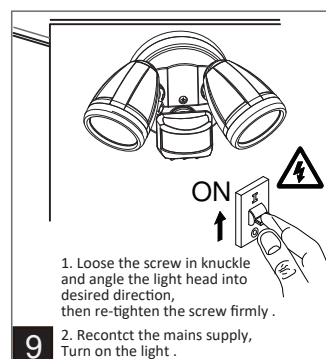
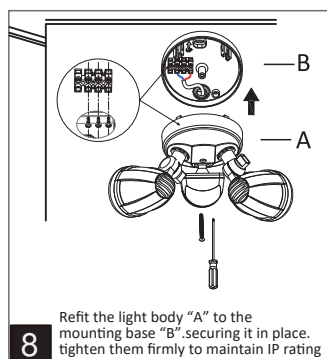
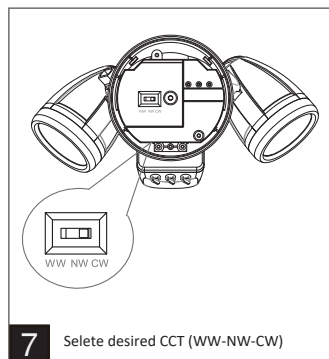
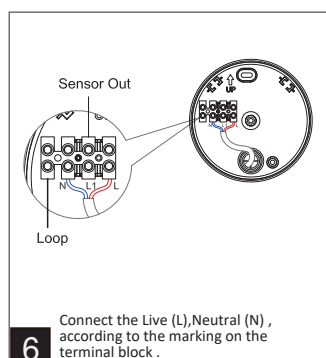
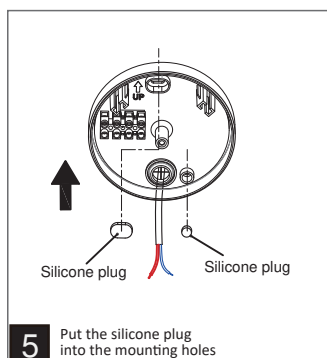
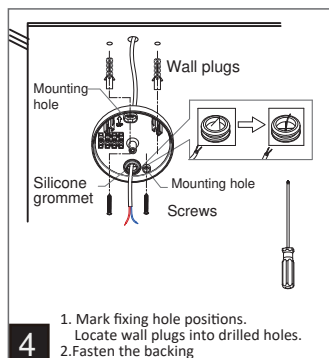
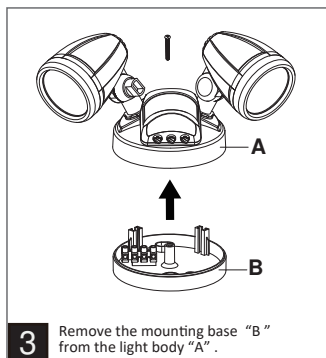
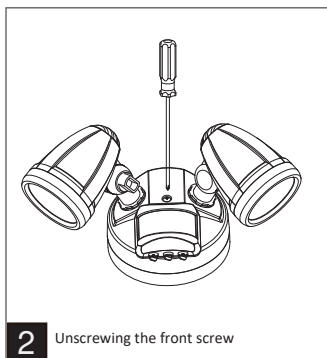
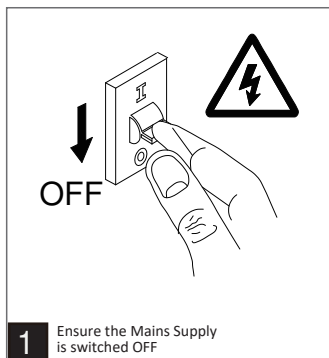


Rotate 350° to adjust sensor arm  
Do not rotate past the sensor arm stops

## BANDIT TRICOLOUR LED SPOTLIGHT WITH PIR SENSOR

**NOTE :** This product must be installed by a licensed electrician .

**NOTE :** For best performance install at a height between 1.8 and 2.5 metres .



# Product Disposal

Please dispose of this product thoughtfully once it has passed its useful life. At the end of their working life, do not throw the appliance out with your household rubbish. Electrical and electronic products contain substances that can have a detrimental effect on the environment and human health if disposed of inappropriately. Observe any local regulations regarding the disposal of electrical consumer goods and dispose of it appropriately for recycling. Contact your local authorities for advice on recycling facilities in your area.

**Martec Australia Pty Ltd**  
**Email:** sales@martec ltd.com.au  
**Contact Phone:** 02 8778 7500  
**Contact Fax:** 02 8778 7555

**Company Address:**  
6 Austool Place  
Ingleburn NSW 1890

**Opening Hours:**  
Monday to Friday  
Warehouse hours: 7.30am – 3.30pm  
Office hours: 8.00am – 5.00pm EST

**WWW.MARTECAUSTRALIA.COM.AU**

**( For Warranty Conditions please refer to the Martec Warranty Terms and Conditions )**

[https://www.martecaustralia.com.au/wp-content/uploads/2023/05/Warranty-Statement\\_Cooling.pdf](https://www.martecaustralia.com.au/wp-content/uploads/2023/05/Warranty-Statement_Cooling.pdf)