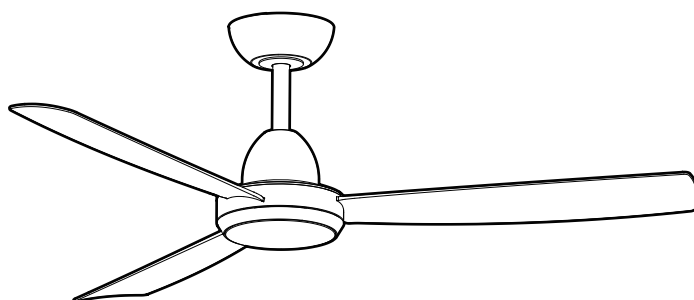
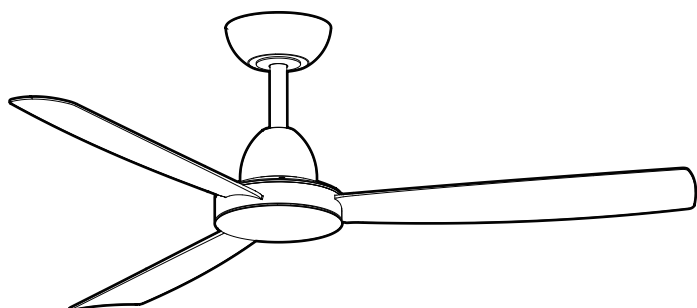


INSTALLATION GUIDE

LEGEND DC Ceiling Fan



Model Parameters (Fan Only):-

MLDC123W

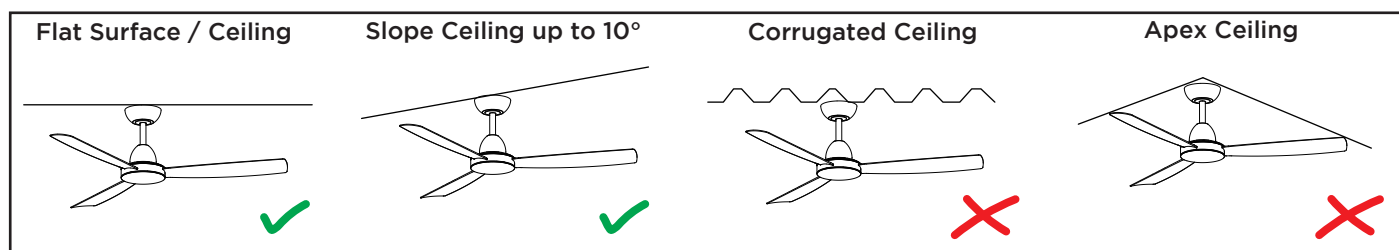
1220mm 3 ABS Blade Wall Control Ceiling Fan Matt White

Model Parameters (Fan and LED Light):-

MLDC1233W

1220mm 3 ABS Blade Wall Control Ceiling Fan with Variable Dim
20W CCT LED Light Matt White

Application



**MUST BE
INSTALLED BY
A LICENSED
ELECTRICIAN**

SAFETY PRECAUTIONS

WARNING:

To ensure safe operation, this fan requires a complete electrical isolation switch (all-pole disconnection type) installed in the fixed wiring, as mandated by AS/NZS 60335-1, clause 7.12.2.

The warranty becomes void if the product was installed without an all-pole disconnection as per the instruction manual by a qualified and licensed electrician.

Example: When a ceiling fan's electrical circuit is equipped with an all-pole safety switch at the switchboard for isolation, it achieves all-pole disconnection as specified in AS/NZS 60335.1, clause 7.12.2.

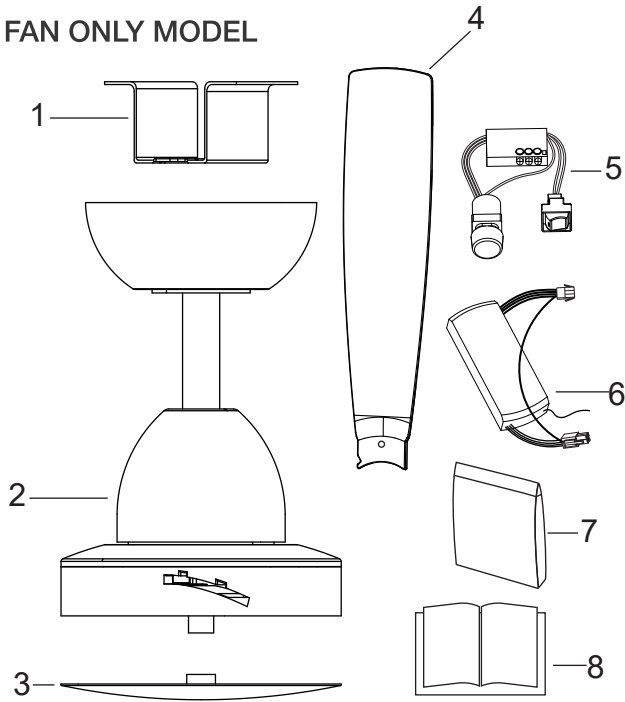
IMPORTANT: An isolation switch must be included as part of the installation by the electrician.

1. Limited Use: This appliance is not designed for use by individuals (including children) with reduced physical, sensory, or mental abilities, or those lacking experience or knowledge, unless supervised or instructed by a responsible person.
2. Child Supervision: Children must be supervised to prevent them from playing with the appliance.
3. Weight Capacity: The mounting structure must support at least 20kg.
4. Ceiling Support: Secure mounting requires solid bracing (timber noggins or joists) in the ceiling. If unavailable, install a timber support secured to the joists. Metal grid ceilings are unsuitable.
5. Bracing Support: The bracing must be firmly secured to the back of any non-structural ceiling panel (e.g., gyprock, plaster) for safety and quiet operation.
6. Blade Clearance: For safe and effective operation, maintain a minimum fan blade clearance of 2.1m from the floor.
7. Professional Installation: Installation must be performed by a licensed electrician.
8. WARNING: If unusual wobbling or oscillation occurs, immediately stop using the fan and contact the manufacturer.
9. WARNING: Light and fan must be on the same phase. Before servicing, ensure both light and fan circuits are disconnected.
10. WARNING: This Fan has click in blades, it is essential that the installing electrician has applied an appropriate amount of force to ensure the blades are clicked in securely before engaging the screw and before turning the fan on. This is to ensure the blade is secured, and in the case of a defective spring latch. Martec will not be responsible for any consequential damage because of this.

BEFORE INSTALLATION

UNPACK THE CEILING FAN CAREFULLY AND IDENTIFY ALL PARTS.

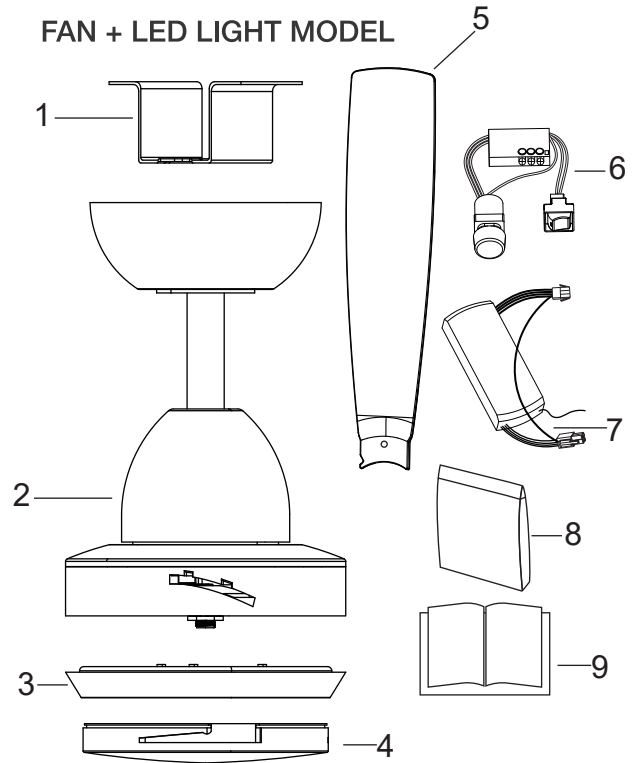
FAN ONLY MODEL



Part List:-

- 1. 1x hanging bracket
- 2. 1x motor assembly
- 3. 1x no light plate
- 4. 3x blades
- 5. 1x wall control
- 6. 1x receiver
- 7. 1x screw and balancing kit(Triangle stickers)
- 8. 1x instruction manual

FAN + LED LIGHT MODEL



Part List:-

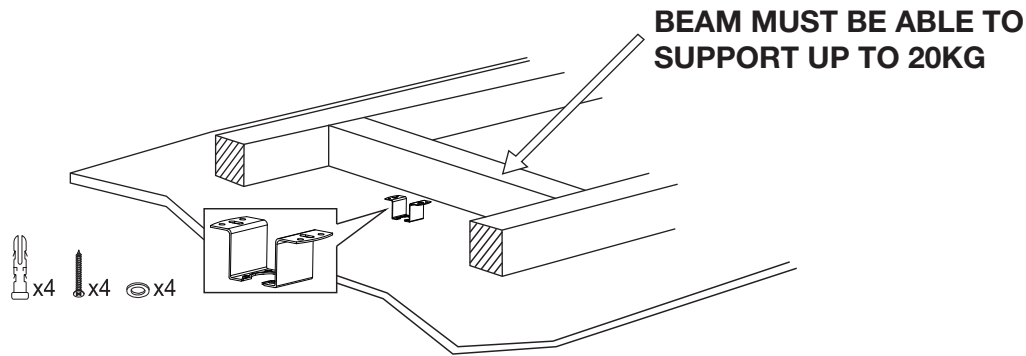
- 1. 1x hanging bracket
- 2. 1x motor assembly
- 3. 1x LED light kit
- 4. 1x light shade
- 5. 3x blades
- 6. 1x wall control
- 7. 1x receiver
- 8. 1x screw and balancing kit(Triangle stickers)
- 9. 1x instruction manual

PLEASE NOTE: Check for any damage to the fan prior to installation.
Physical damage such as marks and scratches are not covered by the in-home warranty.
In this case, please contact the Martec support team to discuss replacement parts.

BEFORE INSTALLATION

MOUNTING BRACKET

- The ceiling fan must be installed in a location where the blades have a minimum 300mm spacing from the tip of the blade to the nearest objects or walls.
- Secure the mounting bracket to a ceiling joist/structure that can carry a load of at least 20kg with included screws, ensuring 30mm minimum screw penetration.



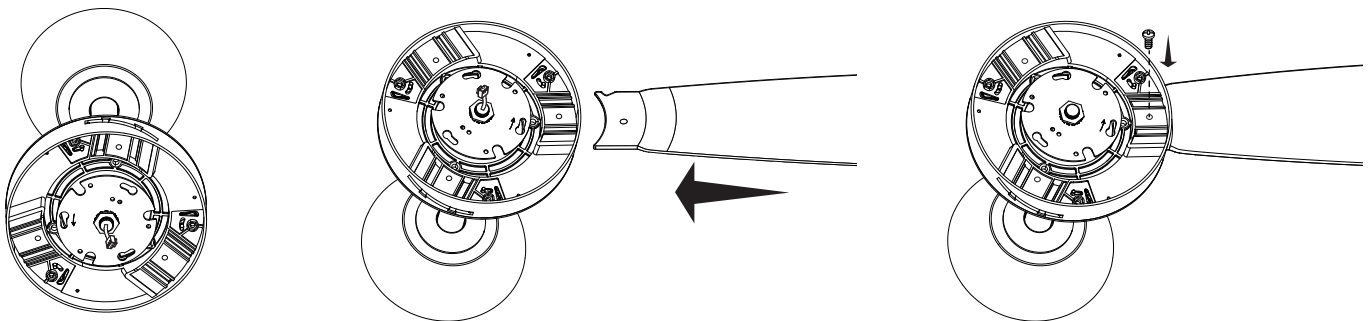
NOTE: THIS PICTURE IS FOR ILLUSTRATIVE PURPOSES ONLY AND DOES NOT REPRESENT THE ACTUAL BRACKET.

“QUICK FIT” BLADE INSTALLATION

Line up the blade with the blade slot on the centre hub of the ceiling fan. Ensure that the side that says this side up is facing the ceiling, gently insert the blade all the way until it clicks into place. Check the blade is properly engaged by applying appropriate amount of force to check there is no issue with locking system. After checking the blade is engaged, tighten up screw to fix blade to flywheel. Repeat this procedure for all blades.

To release blade, unscrew the screw on the blade and then push the patented release lever next to the corresponding blade slot within the ceiling fan hub. This is found by simply unscrewing the bottom plate (on no light models) or removing the light (on with light models).

NB: Ensure the blades do not get damaged or bent during the installation process while the fan is on the ground. This will affect the performance and balance of the fan, and this is not covered under warranty.



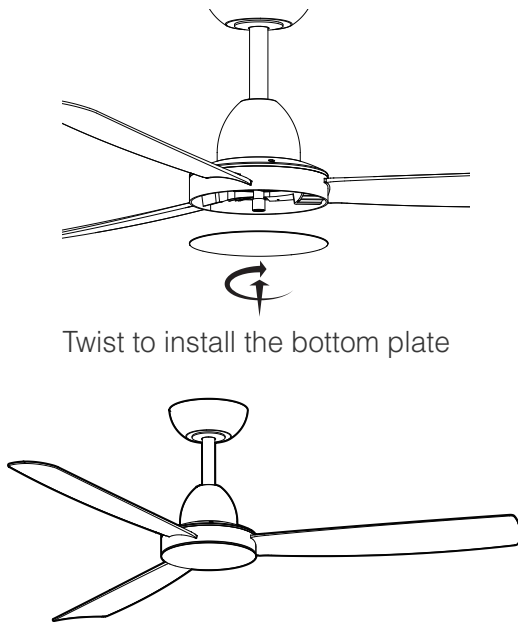
WARNING: This Fan has click in blades, it is essential that the installing electrician has applied an appropriate amount of force to ensure the blades are clicked in securely before engaging the screw and before turning the fan on. This is to ensure the blade is secured, and in the case of a defective spring latch. Martec will not be responsible for any consequential damage because of this.

BEFORE INSTALLATION

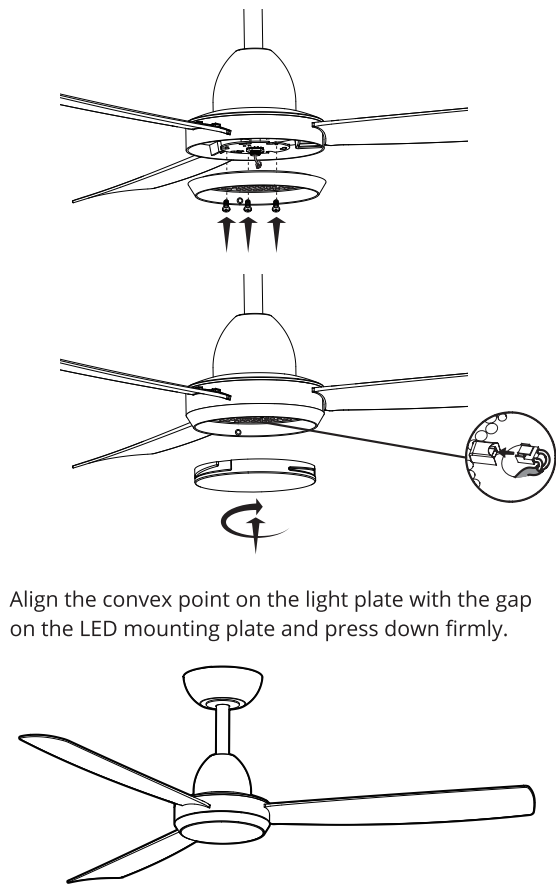
FAN ONLY MODEL, simply attach the bottom plate to the centre hub, **after** the blades have been installed, by lining up the threaded rod and turning the plate on until it can no longer turn further.

If the fan has a light, **after** the blades have been fitted, attach the light kit supplied in the box to the bottom of the fan and affix using the 3 screws supplied. Plug in plug coming from the centre of the fan into the corresponding plug on the light kit. The diffuser supplied is a simple clockwise or counter clockwise turn to install or remove it from the light base.

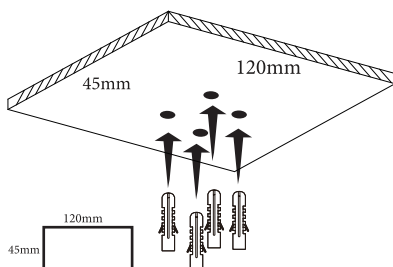
FAN ONLY MODEL



FAN + LED LIGHT MODEL

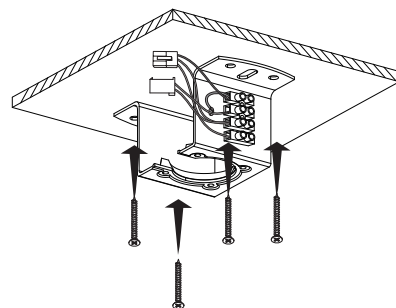


MOUNTING BRACKET INSTALLATION



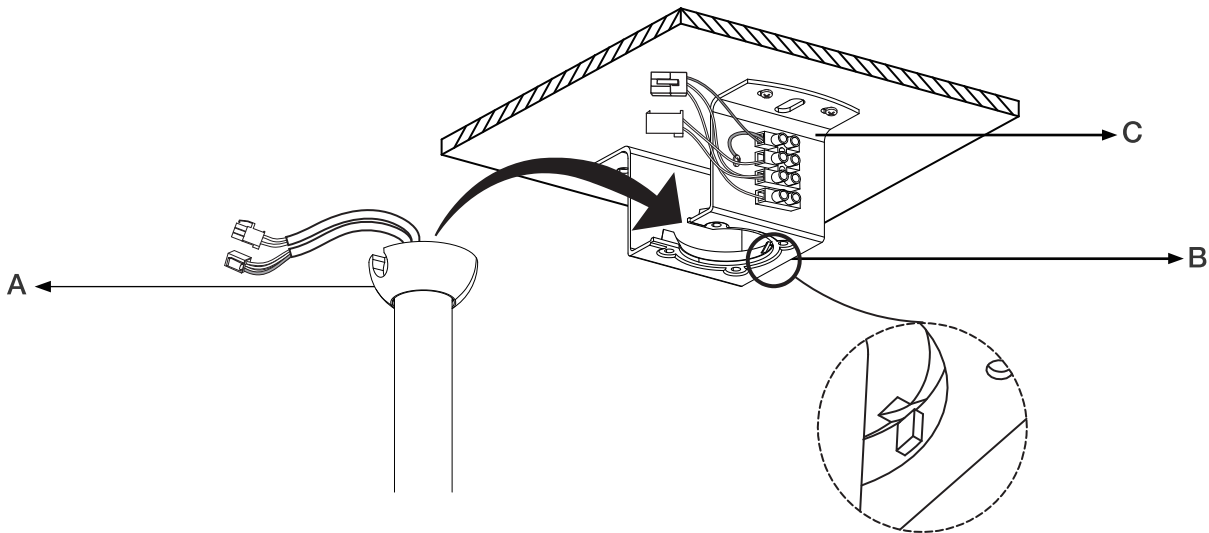
The minimum board size for installing

Align the bracket and screw the hanger bracket to the ceiling tightly.



HANGING THE FAN

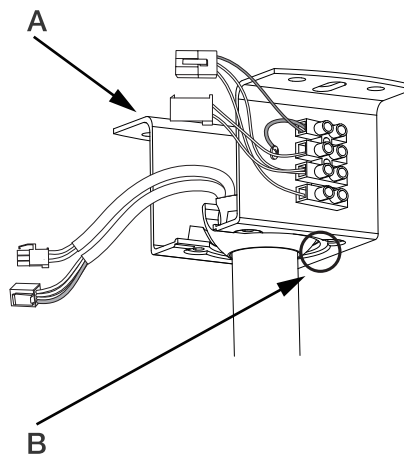
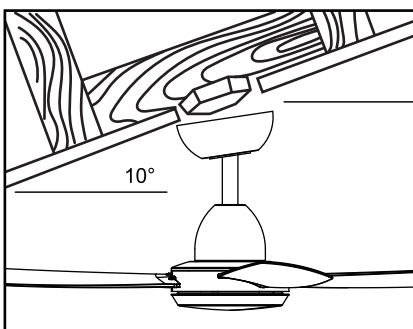
Carefully lift the assembled fan onto the mounting bracket, ensuring the hanger ball slot (A) is completely seated and engaged with the mounting bracket tab (B). This proper engagement (C) prevents fan rotation during operation.



ANGLED CEILING INSTALLATION

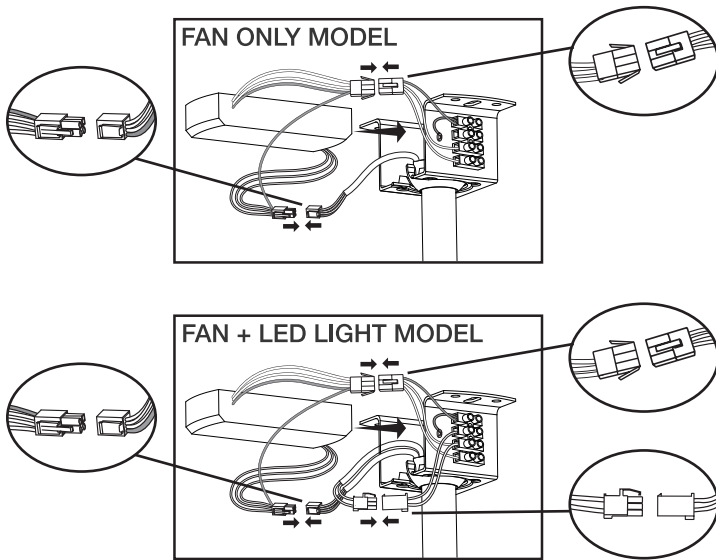
This fan hanging system supports a maximum slope of 10 degree ceiling. If there is a greater slope, then an angle ceiling canopy accessory kit is required.

IMPORTANT: To maintain safety and functionality on raked ceilings, the hanging bracket tab (B), which engages with the hanging ball groove (A), must be installed at the highest point of the ceiling.



INSTALL RECEIVER REMOTE CONTROL

Wire up the receiver with quick connectors and insert into the mounting bracket. Make sure the antenna wire is safely folded inside the canopy cover before final assembly. (Do not cut the antenna wire). Make sure the power is off at the mains before commencement of installation



IMPORTANT REMINDERS

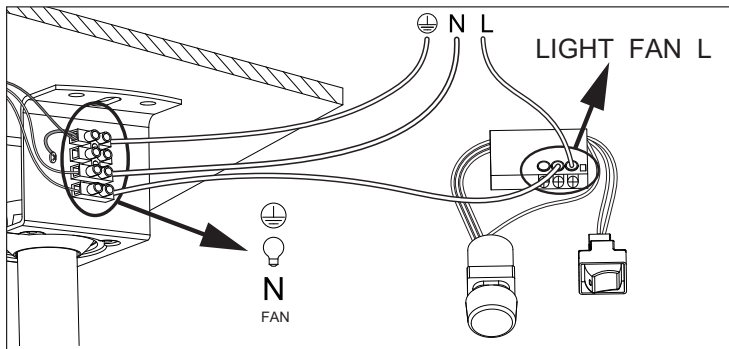
- Receiver must be correctly installed within the mounting bracket.
- When the transmitter cannot control the receiver, please check:
 - i) has sufficient battery in the transmitter, even if the indicator light on transmitter lights up there may not be enough voltage to transmit a command.
 - ii) any existence of similar remote controlled products nearby that cause interference.
- Replace battery if getting low as this will affect transmitter sending commands.
- Take the battery out from the transmitter when leaving unused for a long time to avoid battery leaks.
- Isolation switch must be connected in the line.

INSTALL WALL CONTROL

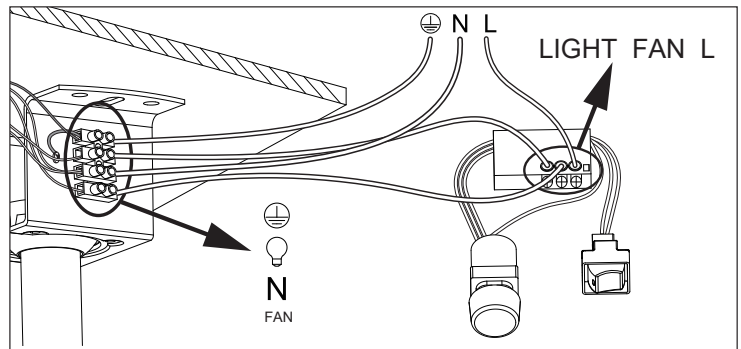
Fix the Earth cable and complete all electrical connections at the mounting bracket.

NOTE: This fan is a Class I electrical product

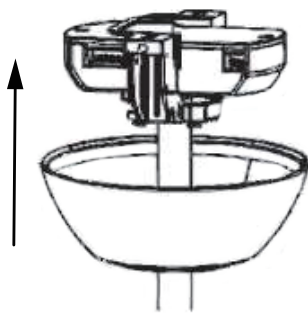
FAN ONLY MODEL



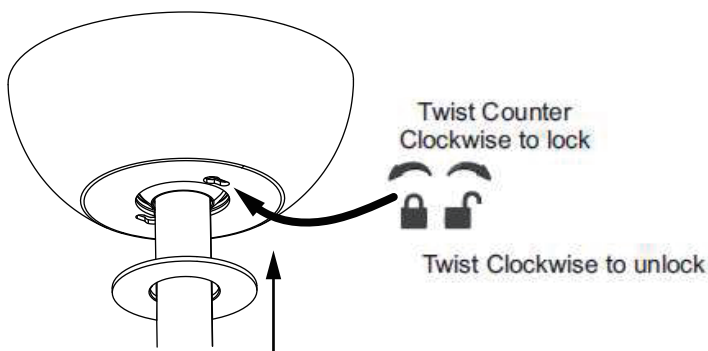
FAN + LED LIGHT MODEL



FINISHING THE INSTALLATION



Slide the canopy upward onto the mounting bracket and rotate it counter-clockwise to lock it in place. Verify that both mounting bracket tabs are fully engaged within the canopy slots. The canopy should have an approximate 3mm gap from the ceiling.





Ensure all wires are tucked neatly into the canopy to avoid any damage

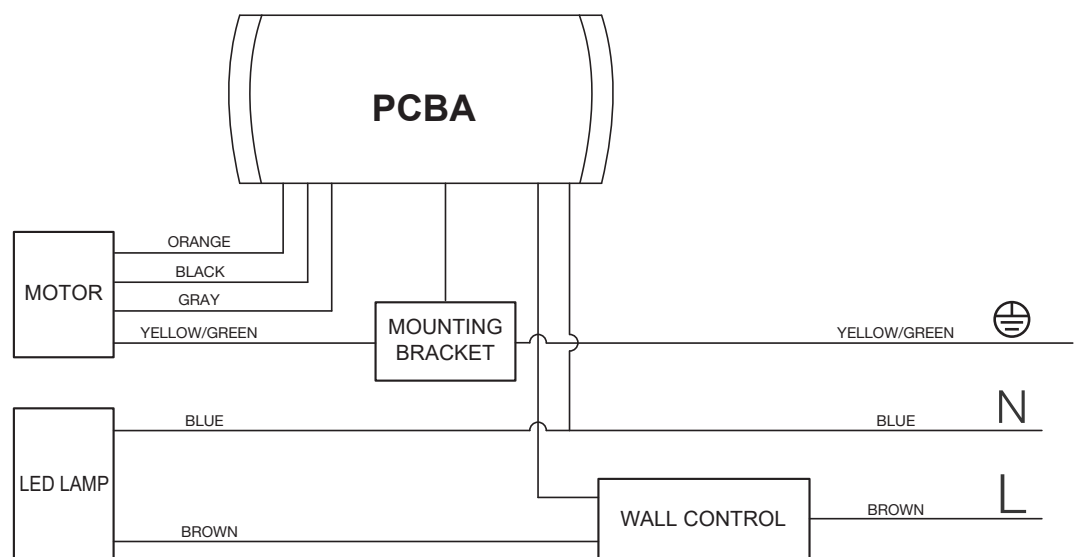
PLEASE NOTE: Ensure the Canopy has fixed fully into position by twisting firmly.

ELECTRICAL WIRING DIAGRAM

WARNING: It is the purchaser's responsibility to ensure that the installation of Martec product has been carried out by a certified electrician as per the guidelines of this instruction manual.

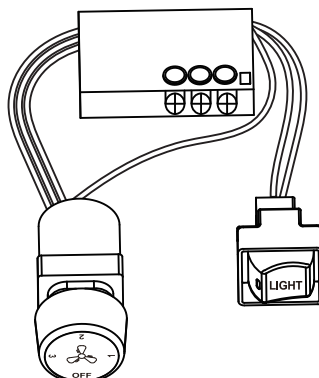
- Connect "LIVE" supply to the "L" of the wall control.
- Connect "FAN" supply to the "FAN" of the terminal block on the mounting bracket.
- Connect "LIGHT" supply to the "💡" of the terminal block on the mounting bracket.
- Connect "EARTH" supply wire to the  of the terminal block on the mounting bracket.
- Connect "NEUTRAL" supply to "N" of the terminal block on the mounting bracket.
- Screw "EARTH" cable from motor to cavity to  on the mounting bracket.

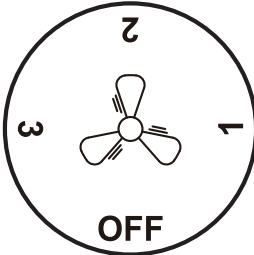
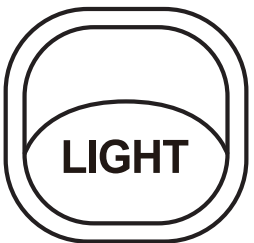
Please note:
This is only applicable to models with a LED light. →



WALL CONTROL OPERATION

PLEASE NOTE: The wall control supplied in the box is the only wall control that can be used for this product.
Only one wall control can be installed per fan.



	<p>Fan Speed</p>	<p>1 is the lowest fan speed 3 is the highest fan speed</p> <p>Summer/Winter Reverse Mode: Turn the fan OFF, then dial 1-2-1-2-1 within 3 seconds, the fan will spin in reversed direction.</p> <p>Repeat the above step to set the fan back in forward mode.</p>
	<p>Light Control</p>	<p>Fan Only Model</p> <p>The Light Switch can directly retrofit to an existing light circuit. The maximum load of the light circuit should be less than 300W.</p> <p>Model with LED light</p> <p>ON/OFF: Switch to turn the light ON / OFF</p> <p>CCT: To change the colour temperature, quickly turn the light ON-OFF-ON within 2 seconds. The light will hold the CCT until next change.</p> <p>Dimming: The light could be dimmable with a Martec Push Button Dimmer MTD350VAP (not included).</p>

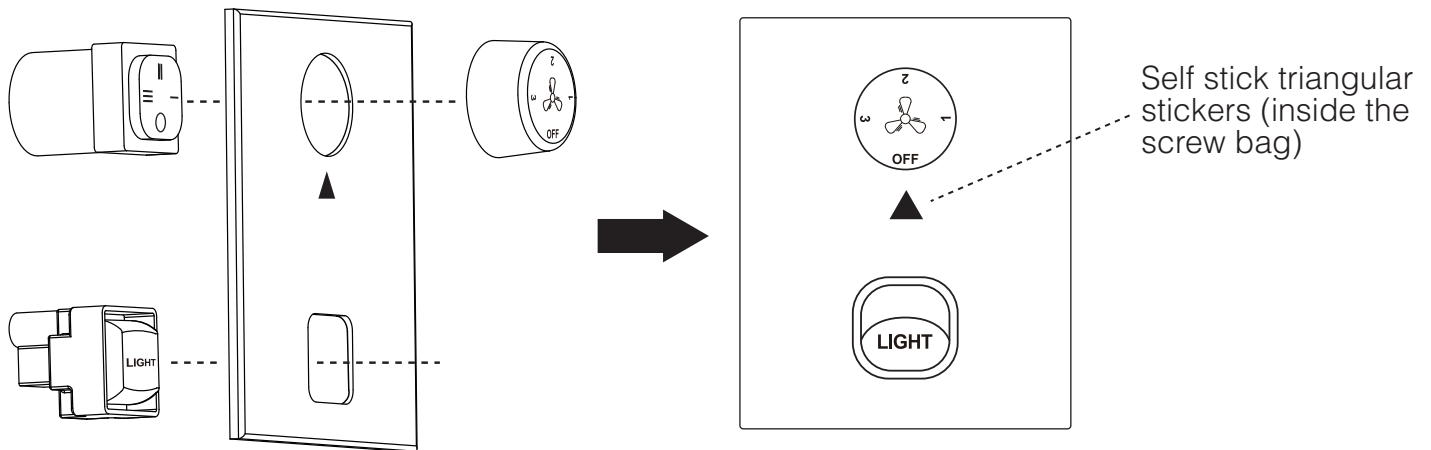
WALL CONTROL INSTALLATION

The wall controller kit consists of two parts:

1. Pre-connected fan dial, light switch and control single processor
2. Fan controller

IMPORTANT:

1. One wall controller kit can only be installed with one fan.
2. If you are installing multiple fans in the house, each fan needs to be installed with its own wall controller kit.
3. The fan dial and light switch are suitable for a standard Australia wall plate.
4. The fan dial and light switch need to be installed in EXACT directions as illustrated below:



5. It is recommended to put the indicating sticker on the wall plate as illustrated in the above images.

IMPORTANT FACTS

Fan Operation:

The DC ceiling fan has been designed for a very fast installation, maximise airflow with minimal energy usage and operate as quietly as possible. Unlike high-speed traditional fans, ceiling fans generate a gentle, high-volume airflow that promotes evaporative cooling. This method is highly effective for cooling people and consumes significantly less power than air conditioning

Wall controlled fans must be installed with an isolation switch on the wall

Warranty is void if parts are used that are not Martec products, including but not limited to wall controls, receivers, led lights, switches, wall control, dimmers, extension rods and angle canopies.

Normal Wear and Tear:

Normal wear and tear, such as loose screws or increased noise due to moving parts, and damage from accidental contact are not covered under warranty. However, regular maintenance, including tightening screws and changing batteries seasonally, can significantly reduce these issues

Night Noise:

It's important to know that while the DC ceiling fan is designed for quiet operation, all electric motors make some noise. If you hear a humming sound, it may be due to ripple control signals from your electricity provider, which is normal. Also, a short beep will sound when you use the remote, confirming the fan has received your instruction.

MAINTENANCE

CARE AND CLEANING:

IMPORTANT: For your safety, always disconnect the power at the main switch before any fan maintenance or cleaning.

- Never submerge the ceiling fan in water or any liquids. This can cause damage to the motor and blades, and create an electrical shock hazard.
- Avoid contact with organic solvents or cleaners on any part of the fan.
- Clean the fan blades with a damp, clean cloth only. Do not use organic solvents or cleaners.
- The motor's bearings are permanently lubricated; no oiling is required.

WARRANTY INFORMATION

2 Year In-Home Warranty

For further information please visit our website (link below) OR scan the QR code.
<https://www.martec.com.au/warranty-statement/>



For technical support, please contact Martec customer service hotline at **(02) 8778 7500**. This fan is suitable for both indoor and covered outdoor areas, as defined in our warranty statement.

To ensure the fan remains in optimal condition, it should be protected from the elements. Exposure to excessive wind, dust, water, or salt air may cause damage that will not be covered under the warranty.

If your fan includes a light, do not remove the light panel, as doing so may cause damage not covered by the warranty. For assistance, feel free to reach out to our customer service team.

If you suspect any issues with the installation, please contact your installer to resolve the matter. In case you believe the issue is related to a manufacturing defect, you can file a warranty claim by visiting **<https://www.martec.com.au/warranty-claim-form>** or scan below QR code.

IMPORTANT NOTICE: All claims for warranty must be accompanied with the following three documents:

1. Copy of the Installation Receipt OR Tax Invoice OR Certificate of Compliance for the installation of the Martec product from the installing electrician.
2. Copy of the Purchase Receipt for the Martec product, and accessories such as extension rod or remote control.
3. Submit an online warranty claim form. Please ensure that the purchaser's full name and contact details are clearly stated, in addition to the full nature of the fault and the serial or P.O. number which can be located on the top motor housing above the Ceiling Fan Blades.

It is the responsibility of the purchaser to keep the documents required for a warranty application for the duration of the warranty period.

Customer Service operates between 8AM to 4PM EST Monday to Friday.
Customer Service Number: (02) 8778 7500

